

DC PowerCab™ 120

Factory-packaged Non-stop DC Power System



Complete non-stop DC power system – includes charger, battery, DC distribution
Ships fully assembled – cuts on-site labor time, cost and risk
Single source convenience – means simple ordering and no-excuses after-sale service
Space-saving cabinet – simplifies planning, consumes less floor space
Fully enclosed system – offers a safer working environment
24, 48, 120, 240 volt systems – suit nearly any application



Inside PowerCab™

DC load center

2-pole, 14 KAIC battery breaker
Up to 12 ea. 2-pole, 14 KAIC load breakers
19 additional load breakers optional
Secure bolt-on (not snap-on) design
UL listed panelboard and breakers



EnerGenius IQ charger

Innova award-winner for "best technology"
Dual microprocessor fault tolerance
Automatic battery check system
System data logger
Field-selectable input voltage
C-UL listed

Optional accessories

Low volt disconnect
Inverter
Charger options
Stainless steel cabinet

Seismic-4 rated cabinet

Ships fully assembled and tested
Top or bottom cable entry
CRS or optional stainless steel
ANSI-61 gray or black finish
Cabinet ETL listed
Optional expansion cabinet for more battery and charger capacity

100 or 150 AH premium battery

24, 48, 125, 250-volt DC systems
10-year VRLA design
Battery secured and pre-wired
Flexible battery jumpers
UL recognized
Higher AH available with multiple strings

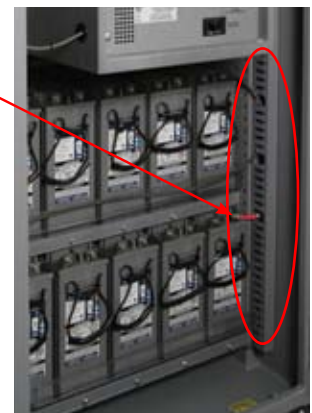


Simple and easy field wiring

Generous open space around DC load center
Top or bottom cable entry
Wire channels organize and segregate wiring

Easily accessible load breakers

Hinged load center door
Hand operated or key lock access

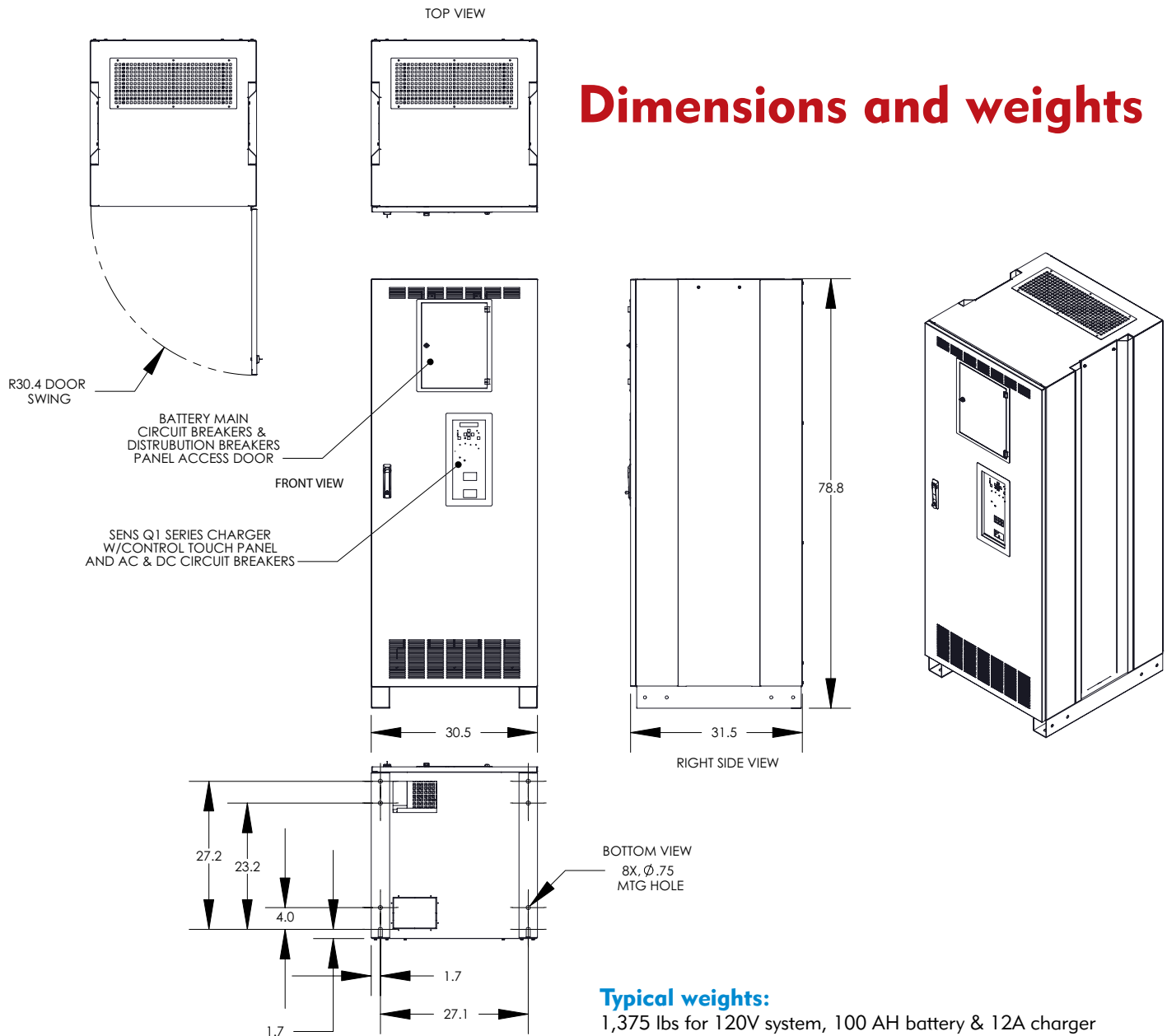


Cuts Risk, Saves Time and Money

SENS PowerCab 120 is factory engineered and arrives fully assembled, ready to install and use. Fast, predictable installation allows your technicians to focus on higher value activities. Start saving valuable engineer and installer time by specifying SENS' PowerCab™ non-stop DC Power System.

Risks & costs	SENS PowerCab™	Conventional system
Suppliers	Single source solution	Multiple suppliers need coordination
Engineering	Factory engineered, assembled & tested	Surprises and costly job site delays
Battery rack	No battery rack or assembly needed.	Some assembly needed!
Battery	No handling of batteries needed	Heavy & dangerous battery installation work
Space	Efficiently uses vertical space	Excessive, unpredictable space need
User safety	Live terminals enclosed in cabinet	Dangerous battery terminals
Ease of use	Single point of contact, standardized system	Multiple suppliers, poor system documentation

Dimensions and weights



PowerCab Model Number

Cabinet type	Cabinet qty	Cabinet material	DC voltage	Batt. strings	Batt amp-hour code	Charger current	AC input	Charger package	System alarms	DC dist'n	Low volt disc.	Inverter code	Factory option
4	A	G	8	1	15	C	T	B	B	C	1	C	
(A)	(B)	(C)	(D)	(E)	(F)	(G)	(H)	(I)	(J)	(K)	(L)	(M)	

	Parameter	Code	Value
(A)	Cabinet	4	PowerCab™ 120 cabinet
(B)	# of cabinets & access	A B C D	One cabinet, key locking main & breaker access doors One cabinet, no locks on main & breaker access doors Two cabinets ¹ , key locking main & breaker access doors Two cabinets ¹ , no locks on main & breaker access doors
(C)	Cabinet material/finish	G B S T	Steel, ANSI 61 gray powder coat finish Steel, black powder coat finish Stainless steel, ANSI 61 gray finish Stainless steel, natural finish
(D)	DC output voltage code	2 4 8 9	24-volt nominal (12 cells lead-acid) 48-volt nominal (24 cells lead-acid) 120-volt nominal (60 cells lead-acid) 240-volt nominal (120 cells lead-acid) ¹
(E)	Battery strings	1 – 4	1 to 4 strings.
(F)	Battery AH code	10 15	100 AH 150 AH
(G)	EnerGenius IQ charger output current	6 B N C D E	6 amp (24, 48, 120 & 240 V systems) 12 amp (24, 48, 120 & 240 V systems) 16 amp (24, 48 & 120V systems) 25 amp (24, 48 & 120V systems) 35 amp (24 & 48V systems) 50 amp (24 & 48V systems)
(H)	AC input code	8 P T V	480 VAC, 60 Hz, 1Ø 115-120 / 208 / 230-240 VAC, 50/60 Hz, 1Ø 115-120 / 208 / 230-240 VAC, 60 Hz, 1Ø 400 VAC, 50/60 Hz, 1Ø
(I)	Charger package code	A B C	IQ PE-5 Package (charger option code 511) IQ EE Plus Package (charger option code 514) IQ EE Extreme Package (charger option code 544)
(J)	Alarm options	A B	Summary alarm only Individual relay contacts
(K)	DC load center	C E F	Panel, 100A, 2P battery main, 2P charger feed + 12 ea. 2P load breaker positions ² Option "C" plus bolt-on external 2P, 20-circuit breaker panel (31 circuits total) ³ Option "C" plus interconnected distribution panel in second battery cabinet
(L)	Low volt disconnect	0 1 2	No low DC voltage disconnect Low DC voltage disconnect ⁴ Redundant low DC voltage disconnect
(M)	Inverter code	0 A B C D	No inverter 600 watt inverter, 120 VAC, 60 Hz output 600 watt inverter, 230 VAC, 50 Hz output 1100 watt inverter, 120 VAC, 60 Hz output 1100 watt inverter, 230 VAC, 50 Hz output

How to Order PowerCab

1. Build the model number of the PowerCab that best fits your application.

--	--	--	--	--	--	--	--	--	--	--	--	--	--	--	--

2. Specify DC distribution breakers

- ☐ Qty ea. 15-amp breakers
- ☐ Qty ea. 20-amp breakers
- ☐ Qty ea. 25-amp breakers
- ☐ Qty ea. 30-amp breakers
- ☐ Qty ea. 35-amp breakers
- ☐ Qty ea. 40-amp breakers
- ☐ Qty ea. 45-amp breakers

☐ **Total** (≤ 12 std config'n, or ≤ 31 w/ expanded load center)

3. Provide the model number and circuit breaker configuration to your sales rep or SENS directly

SENS PowerCab™ The Power is in the Package



111046 A



1. Two cabinets required for 240 VDC system, or 120V battery > 150 AH.

2. 11 load breaker positions are available in two-cabinet configuration unless load center option "F" is specified

3. Mounted on left side of system cabinet, requiring left side access

4. Opens battery-to-load circuit at 1.75 v.p.c. to prevent over-discharge of battery, and closes again after return of charger output. Operation is automatic

Contact information

For information and service on any SENS product, please contact us at:

Sales 1.866.736.7872 • 303.678.7500 • Fax 303.678.7504

www.sens-usa.com • info@sens-usa.com

Stored Energy Systems, LLC

1840 Industrial Circle, Longmont, CO 80501 USA